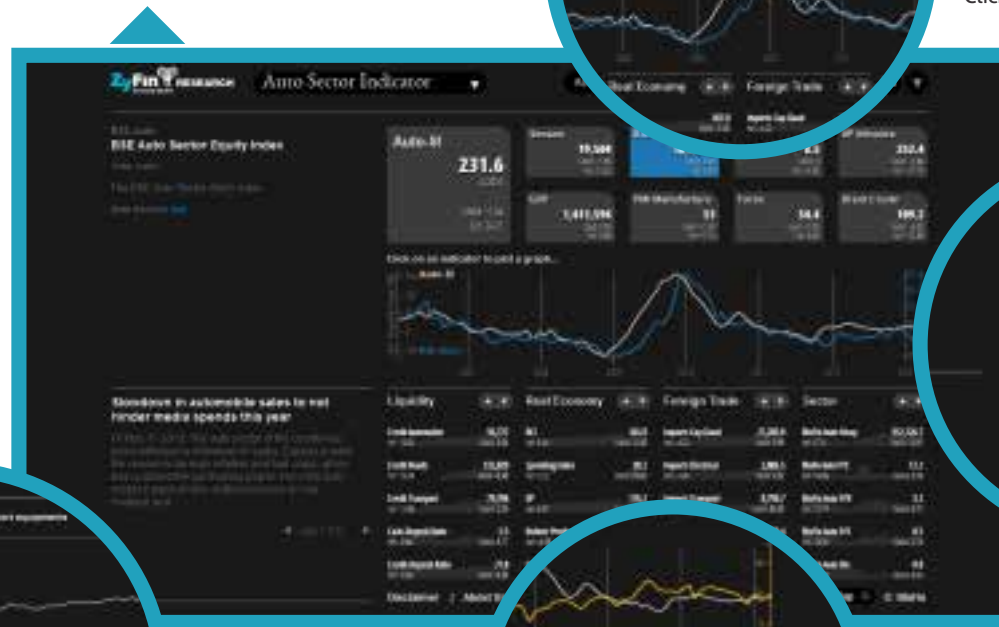


Automotive Sector Indicator (ASI)

Gauge the Auto Sector in India

Timely information on the state of the Indian Auto Sector. A monthly composite indicator of primary and secondary macro variables.

[Visit App Website](#)



Compare with Co-incident Indicators

Click on names on the top to compare with ASI. Click again to turn off comparison.



Compare with Components

Click on components' names to compare with ASI. Click again to turn off comparison.



Detailed view

Double-click an indicator name for a detailed view



Heatmap view of Components

Heatmap button below the indicators turns on the Heatmap View of all the indicators. Click it again to hide heatmap view.

Key Facts

Automotive Sector Indicator

Frequency
Monthly

Components
12 Monthly Economic Indicators with a strong impact on Auto Sector

Lead Factor
3-4 Months

Benchmark Series
Sector specific stock index (S&P BSE Auto Index)

Empirical Time Series
2004-2012

For Sales Enquiries
sales@zyfn.com
91-22-61108484

Feedback and requests for more information
info@zyfn.com

The Sector Indicators are a group of lead indicators on multiple industrial sectors within the Indian economy (e.g. Automotive, Banking) The indicators provide timely information regarding the future course of the corresponding industrial sectors.

They are based on a scientifically selected set of existing economic indicators (proprietary and secondary), each with a lead impact on the corresponding sector's benchmark stock index. These composite indicators are designed to serve as an advance indicator of bear and bull rallies within the corresponding sector.

The ZyFin Research Business Sector Indicators were developed by a team of economists and statisticians led by Dr. Sam Thomas, Ph.D., Senior Advisor at ZyFin Research. Dr. Thomas is also Professor of Banking and Finance at the Weatherhead School of Management of Case Western Reserve University in Cleveland, Ohio.

Methodology

- ☑ **Data Validity** : Components with a strong impact on auto sector in India are short-listed.
- ☑ **Statistical Validity** : Statistical tests are run to validate the robustness of the data series to ensure normality and de-seasonalise the data. This is followed by testing their statistical lead potential on the benchmark series.
- ☑ **Economic Validity** : Each of the statistically validated components is put through subjective economic validity tests before including it in the final computation.
- ☑ **Index Construction** : A weight scheme is designed based on regression procedures (including out-of-sample forecast tests) applied on the components and the corresponding benchmark.

Sector Indicator Components : Auto

The set of indicators considered for developing the composite Indicator comprise both proprietary and non-proprietary data with a leading effect on the Indian automotive sector.

- ☑ Credit and Liquidity (7)
- ☑ Sector Performance (5)
- ☑ Real Economy (9)
- ☑ Foreign Trade (5)

DELIVERY CHANNELS

Report

The monthly Auto Sector Indicator report summarises the results for the corresponding month and highlights existing and evolving trends among the sub components. It also includes commentaries from noted macro-economic experts on prevailing trends.

Data Subscription

Time series data is available in the form of Microsoft® Excel Add-Ins, which allows auto download of relevant data fields.

Web/Mobile Application (App)

The data can also be easily viewed through our state-of-the-art web/mobile application with a user friendly interface that allows data views through multiple iterations.

Disclaimer

This Report is a compilation of data presented in the form of statistics and analysis for ease of reference and user friendliness. ZyFin (to mean and include ZyFin Research Limited and its officers, directors, employees, affiliates, group companies, subsidiaries, parent companies, agents, representatives or subcontractors) does not, expressly or implied, warrant, guarantee or make any representations with respect to the information or notes contained therein, concerning the use, results of use or inability to use or contents of data, in terms of update, accuracy, reliability, completeness, correctness, prevailing, functionality, performance, continuity, timeliness or otherwise, fitness for a particular purpose. The information contained herein is for general informational purposes only. ZyFin is not liable for investment decisions which may be based on the views expressed in this Report. ZyFin especially states that it has no financial liability whatsoever to the subscribers/ users/ transmitters/ distributors of this Report. Nothing contained herein shall be construed as purporting to offer any information, advice or services in any manner to any person. ZyFin Research Limited is not an investment advisory service, is not an investment adviser, and does not provide personalized investment/financial advice or act as an Investment/ Financial advisor. It is not registered/licensed with any Financial/ Capital Markets regulator (whether in India or any other jurisdiction). Wherever possible, all the figures and data given are dated, and the same may or may not be relevant at future date. The information/graphs/charts contained herein are based on certain assumptions and have been compiled from sources, which ZyFin believes to be reliable, but cannot guarantee its accuracy or completeness. Any forward-looking word, phrase or expression is subject to risks, uncertainties and assumptions that could cause actual results to differ materially from those contemplated by the said forward-looking word, phrase or expression. The opinions expressed and facts referred to herein are subject to change without notice and ZyFin is under no obligation to update the same. Any information or data provided may contain inaccuracies and/or typographical errors. By providing data, statistics, indicators and indices of various investment-oriented communities and platforms, no recommendation is made in any manner to invest in stocks, securities, financial products, communities or any other asset. The information or data shall not be used to create indices, databases, risk models, analytics, software, or in connection with the issuing, offering, sponsoring, managing or marketing of any securities, portfolios, financial products or other investment vehicles utilizing or based on, linked to, tracking or otherwise derived from the information/data without a valid license agreement from ZyFin. All the proprietary rights, statutory or otherwise contained in the information received by such person shall remain in exclusive property of ZyFin. Any reproduction, redistribution or transmission, for consideration or otherwise, of any such information contained herein is strictly prohibited and would constitute a breach of the applicable laws.

Research Private Limited
11th Floor, Nehru Centre,
Dr. Annie Besant Road,
Worli,
Mumbai – 400018
Web: <http://zyfin.com/research>
Email: info@zyfin.com

Copyright© 2012 by ZyFin.

*Redistribution, reproduction and/or photocopying in whole or in part are prohibited without the written permission.
All rights reserved.*